



NEW for 2009!



Contrast Stitching



Printed Vest



Item #L1-21-1

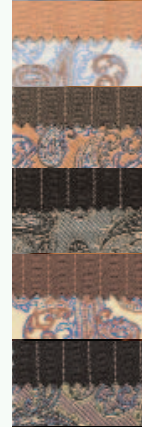
- 3 Piece Suit 3 Button Suit.
- Single Breasted, 34" Length.
- Contrast Double Stitching on Jacket
- Denim Texture, V Stitched Back & Belt.
- Double Vents, Double Breast Printed Vest & Lining. • **Wide Leg Pants** with Stretch Waist. • Luxurious Poly/Rayon.

Sizes: 36-56R, 38-56L.

Colors: Beige, Black, Brown, Navy, Salmon.

Item #L1-21-2

NEW for 2009!



- 3 Piece, 4 Button Suit.
- 34" Length, Striped Jacket Pattern.
- Ticket Pockets, Double Vents.
- **Paisley Printed** Double Breasted Vest w/ Lapels and Contrast Piping. • Matching Lining.
- **Wide Leg Pants** w/ Stretch Waistband for your Comfort. • Luxurious Poly/Rayon.

Sizes: 36 - 56R, 38 to 56 L.

Colors: Black/Coral, Brown/Coral, Coral/Coral, Navy/Coral, Wine/Coral.

NEW for 2009!

Item #L1-21-3



- 4 Piece, 4 Button Suit. 34" Length.
- Bonus 2 Pairs of Pants w/ Stretch Waist.
- Ticket Pocket, Plaid Jacket Pattern.
- Double Vents, & Double Breasted Vest.
- 1/2 Solid and 1/2 Plaid.
- Luxurious Poly/Rayon.

Sizes: 36 - 56R, 38-56L.

Colors: L Butter, Grey, Lavender, Olive, Salmon, Tan.

NEW for 2009!

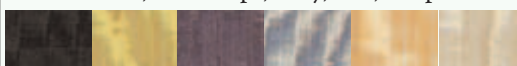
Item #L1-21-4



- 3 Piece, 4 Button Suit, 34" Length.
- Ticket Pocket, Fancy Pocket Flaps.
- Double Vents, Seamed Sleeves.
- **Wide Leg Pants** with Stretch Waist Inserts.
- Luxurious Poly / Rayon.

Sizes: 36 - 56R, 38 to 56 L.

Colors: Black, Gold, Grape, Grey, Tan, Taupe.



NEW for 2009!

Item #L1-21-5



- 2 Piece, 4 Button Suit. • 34" Length.
- Military Look with Epulets & 4 Cargo Pockets, • Twill Stripe Pattern.
- Adjustable Waist Tabs on Jacket
- Back Pleat w/ Tab. • Luxurious Poly/Rayon
- **Wide Leg Pants** w/ Stretch Waist Inserts.

Sizes: 36 - 56R, 38 to 56 L.

Colors: Black, Navy, Oatmeal, Tan.

Special Order Items, Ship Out in 2 Days

Item #L1-22-1

NEW for 2009!



- 3 Piece, 4 Button Suit, 34" Length.
- Piping on Jacket, Double Vents, Reversible Striped Vest, Inverted Pleat,
- **Wide Leg Pants** with Stretch Waist.
- Bonus Matching Tie and Hankie.
- Luxurious Poly/Rayon.

Sizes: 36 - 56R, 38 to 56 L.
 Clrs: Bourbon, Black, Brown, **Olive**, Pewter.



NEW for 2009!

Item #L1-22-2

- 3 Piece Suit with 3 Buttons.
- Satin Lapels, • Embossed Shadow Stripe Jacket.
- Vest with Lapels with Piping Detail.
- Luxurious Poly/Rayon

Sizes: 36 - 56R, 38 to 56 L.
 Colors: Black, Blue, Cinnamon, Cream, **Rose Pink**, White.

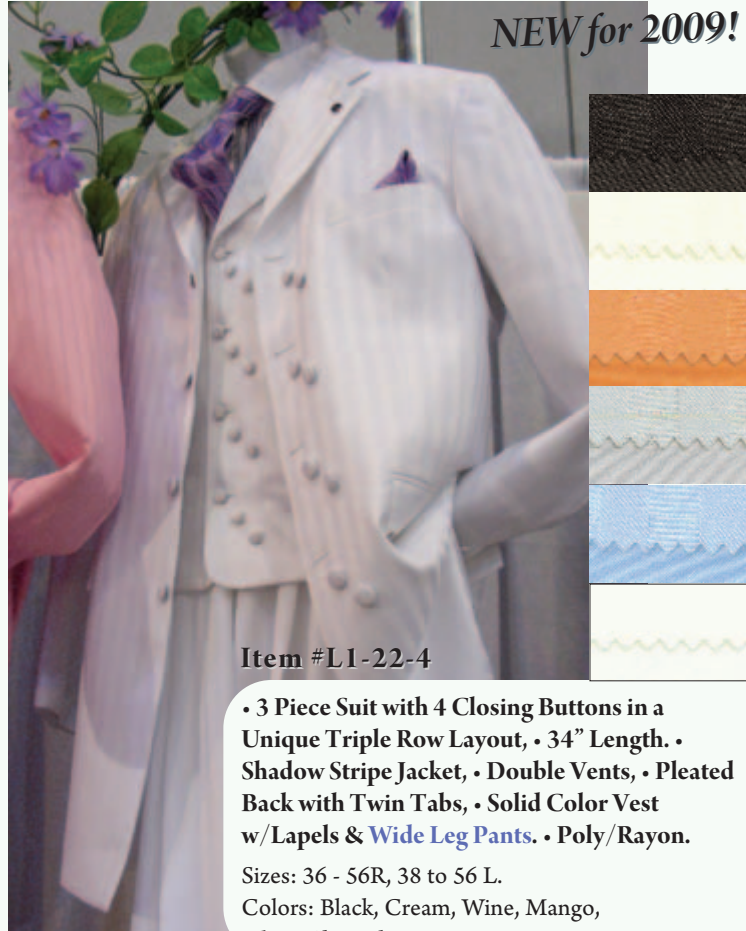


NEW for 2009!

Item #L1-22-3

- 3 Piece Suit, 3 Buttons with Vest.
- Pinstripe Pattern.
- Luxurious Poly/Rayon

Sizes: 36 - 56R, 38 to 56 L.
 Colors: **Black/White**, Cream/White, Brown/White, Grey/White, Navy/White.



NEW for 2009!

Item #L1-22-4

- 3 Piece Suit with 4 Closing Buttons in a Unique Triple Row Layout, • 34" Length. • Shadow Stripe Jacket, • Double Vents, • Pleated Back with Twin Tabs, • Solid Color Vest w/Lapels & **Wide Leg Pants**. • Poly/Rayon.

Sizes: 36 - 56R, 38 to 56 L.
 Colors: Black, Cream, Wine, Mango, **Silver**, Sky, White.

Special Order Items, Ship Out in 2 Days



Item #L1-23-1

- 3 Piece, 4 Button Suit , 34" Length.
- Custom Contrasting Pic Stitching
- Neat Dot Repeat Pattern, Double Vents.
- Abstract Pattern Vest with Notch Lapels.
- **Wide Leg Pants** w/Stretch Waistband for Your Comfort. • Luxurious Poly/Rayon.

Sizes: 36-56R, 38-56L.

Colors: Black, Blue, Camel, Mushroom, Tan.



Item #L1-23-2

- 3 Piece, 4 Button Suit, 34" Length.
- Ticket Pocket, Contrast Buttonhole Stitching, • Double Vents, • Back Belt,
- V Stitching on Back. • Double Breasted Peak Lapel Vest, • **Wide Leg Pants** .
- Window Pane Pattern. • Poly/Rayon.

Sizes: 36 - 56R, 38 to 56 L.

Colors: Silver Grey, Olive, Chambray Blue, Tan, Champagne.



Item #L1-23-3

- 2 Piece Suit Single Breasted.
- 3 Buttons, •Multi Stripe Pattern.
- Luxurious Wool Blend.

Sizes: 36 - 56R, 38 to 56 L.

Colors: Grey Combo,, Olive Combo, Tan Combo, Taupe Combo.



Item #L1-23-4

- 6 Button Tuxedo, Fashion Length. • Matching Vest and Tie Sets are Additional and Sold Separately. • Poly/Rayon.

Sizes: 36-52R, 38 - 56L.

Colors: White, Black.



Item #L1-23-5

- 3 Piece Suit, 34" Length, 4 Buttons with Back Pleat. Reversible Pinstripe Vest. Poly Rayon.

Sizes: 36 - 56R, 38 to 56 L.

Colors: Black/Cream, Cream/Black.



Item #L1-24-1

- 3 Piece Suit with 3 Buttons, • 33" Length,
 - Curved Lapels, • Triple Eyelets, • Double Vents, • Back Pleat with Tab, • Vest with Lapels, • Pic Stitching, • Gangster Stripe.
- Poly/Rayon.

Sizes: 40 - 52R, 40-52L. Colors: 71 White/Blue, 61 Powder/White, 69 Black/Pink, 75 White/Black, 79 White/Lavender.

NEW for 2009!



Item #L1-24-2

- 3 Piece Suit, • 1 Button Peak Lapel, with Back Pleat, • Pic Stitching, • 4 Pockets, • Cross Over Vest, • Shiny Stripe Pattern.
- Poly/Rayon.

Sizes: 42 - 54L, 40 - 54 R.
Colors: 23 Taupe, 20 Black, 32 Rust.

NEW for 2009!

NEW for 2009!



Item #L1-24-3

- 3 Piece Suit, • 1 Button, • Wide Peak Lapels, • Back Pleat, • Pic Stitching, • Slant Close Vest w/ Fabric Back, Lapels & Back Pleat. • Semi Wide Leg Pant. Plaid Pattern. • 100% Wool.

Sizes: 40 - 50R, 42 - 52L.
Color: Carcoal Plaid with Blue Back.

NEW for 2009!



Item #L1-24-4

- 3 Piece Suit, • 1 Button Jacket w/Wide Peak Lapels. • Back Pleat, • Pic Stitching.
- Slant Close Vest w/Fabric Back. • Lapels & Back Pleat. • Semi Wide Leg Pant.
- Plaid Pattern. 100% Wool.

Sizes: 40-50 R, 42-52L.
Color: Navy Stripe.



Item #L1-24-5

NEW for 2009!

- 3 Button Suit.
- Tabs on Vents and Pants.
- Back Pleat with Tab.
- Stretch Cotton Fabric.

Sizes: M - 4X.
Colors: 00 Black, 01 Blue.

Special Order Items, Order By 2 PM, Ship Out In 2 Days

NEW for 2009!**Item #L1-25-1**

- 3 Piece Compose Suit. • 3 Button Plaid Jacket, • Reversible Vest, • Solid Pants.
- Poly/Rayon.

Sizes: 40 - 50R, 40 - 50 L.

Colors: 43 Taupe, 42 Orange Melon, 40 Grey, 42 Shrimp, 47 Apricot, 49 Lavender.

NEW for 2009!

Item #L1-25-2



Arriving Late May!

- 3 Piece Suit with 3 Buttons, • Multi Stripes • Side Vents, • Reversible Vest, • Solid Pants. • Poly/Rayon.

Sizes: 40 - 50R, 40 - 50 L.

Colors: 01 Blue/Yellow, 00 Black/Gold, 02 Shrimp, 03 Brown/Tan.

NEW for 2009!**Item #L1-25-3**

- 2 Button Statement Jacket.
- Velvet Lapels.
- Doyle Flocking Over Plaid.

Sizes: 40-48R, 42-48 L.

Colors: Black/White

NEW for 2009!**Item #L1-25-4**

- Jacket with 2 Buttons. • Peak Lapel.
- Side Vents, • Awning Stripe Pattern.
- Poly Rayon.

Sizes: 40 - 50 R, 40 - 50 L.

Colors: 20 Natural w/Wheat, 21 Blue/Cream/ Natural, 23 Cream/Chambray/ Natural, 31 Cream/Denim.

**Item #L1-25-5****NEW for 2009!**

- Long Sleeve Denim Set .
- 2 Pockets. • Red Stitching.
- 100% Cotton.

Sizes: M-5X

Colors: 01 Denim Navy Blue.

Special Order Items, Order By 2 PM, Ship Out In 2 Days

JACKET SETS



Item #L1-26-1 *NEW for 2009!*

- 3 Button Jacket, • 4 Cargo Pockets, • Epilets, • Leisure Suit, • Double Pleat Pants. • 100% Stretch Cotton.

Sizes: S - 6X.

Color: 01 Denim Blue/White Stripe.



Item #L1-26-2 *NEW for 2009!*

- 4 Button Banded Collar Suit.
- Cargo Pocket on Frosted Top.
- Solid Pant. • Stretch Poly/Rayon.

Sizes: M - 5X.

Colors: 11 Blue, 00 Black, 15 White, 10 Grey.



Item #L1-26-3 *NEW for 2009!*

- 4 Button Banded Collar Suit.
- Cargo Pocket on Washed Denim Top.
- Solid Pant. • Stretch Cotton.

Sizes: M - 5X.

Colors: 00 Black, 01 Blue.

NEW for 2009!



Item #L1-26-4

- Shirt Set with Patch Pockets.
- Shoulder Epilets.
- Linen Look Pattern.
- Raime and Cotton Blend.

Sizes: M - 6X.

Colors: 15 White, 03 Natural, 00 Black.

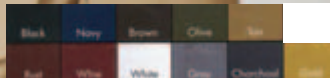


Item #L1-26-5

- 3 Piece Suit. Single Breasted • 3 Button Suit with Pinstripe Pattern, • 32" Length. • 100% Poly.

Sizes: 38R-56R, 40R-62L, 38-46 6" Drop, 48-56 5" Drop.

Colors: Black, Brown, Bronze, Charcoal, Gold, Grey, Navy, Tan, Olive, Wine.



NEW for 2009!

Item #L1-26-6

- Denim Set • Cargo Pocket Top with Contast Stitching. • 100% Cotton.

Sizes: M - 6X.

Color: 01 Blue

Special Order Items, Order By 2 PM, Ship Out In 2 Days



Item #L1-27-1 *NEW for 2009!*

- 2 Piece Suit with 3 Buttons.
- Tonal Multi Stripe Pattern.
- Double Vents, • Expandable Waist.
- Super 150 Wool.

Sizes: 38-56R, 38-56L.

Colors: Black, Navy, Charcoal, D. Brown.



Item #L1-27-2 *NEW for 2009!*

- 2 Piece Suit with 3 Buttons. • Multi Pin Stripe Pattern. • Double Vents,
- Expandable Waist. • Super 150 Wool.

Sizes: 38-56R, 38-56L.

Colors: Grey, Black, Navy.



Item #L1-27-3 *NEW for 2009!*

- 2 Piece, • 2 Button Suit w/Banded Collar and Solid Shawl Lapel. • Multi Directional Tone on Tone Stripes. • Microfibre.

Sizes: 38-56R, 38-56L.

Colors: Off White, Black, Chestnut.



Item #L1-27-4 *NEW for 2009!*

- 2 Piece, • 3 Button Suit with Epilets. • Cargo Pockets and Denim Stitching.
- Back Pleats. • Poly/Rayon Blended.

Sizes: 38 - 56R, 38 - 56L.

Colors: Navy, Black, White, Taupe.



Item #L1-27-5 *NEW for 2009!*

- 3 Piece Suit, featuring: • 3 Buttons, • 34" Length, • Back Pleat, • Rear Collar Button,
- Unique Vest-Shirt Combo, • Expandable Waist Pants. • 75% Poly, 25% Rayon.

Sizes: 38-56R, 38-56L.

Colors: Black, White, Brown, Taupe.



Item #L1-27-6 *NEW for 2009!*

- 2 Piece Denim Suit with 3 Buttons and • Contrasting Piping. • 100% Cotton.

Sizes: 38-56R, 38-56L.

Colors: Blue, Black, White.

Special Order Items, Order By 2 PM, Ship Out In 5 Days

MENS SUITS



Item #L1-28-1 *NEW for 2009!*

- 3 Piece Suit with 2 Buttons, • Floral Embroidery Motif, • Satin Trims,
- Double Vents. • Hi Fi Polyester.

Sizes: 38-56R, 38-56L.

Colors: Black, White, White.



Item #L1-28-2 *NEW for 2009!*

- 3 Piece Suit with 6 Buttons, • Broad Curved Lapels, • Shiny Twill Stripe Pattern, • Double Vents with Vest.
- Poly/Rayon Blended.

Sizes: 38 - 56R, 38 - 56L.

Colors: Taupe, Silver, Wine.



Item #L1-28-3 *NEW for 2009!*

- 3 Piece Suit with 6 Buttons, • Broad Curved Lapels, • Low Sheen Sharkskin Pattern, • Double Vents. • Polyester.

Sizes: 38-56R, 38-56L.

Colors: Olive, Royal, Purple, Grey, Navy, Black.



Item #L1-28-4 *NEW for 2009!*

- 3 Piece Suit with 1 Button, • High Neck Vest, • Tonal Gangster Stripe
- Poly/Rayon Blended.

Sizes: 38-56R, 38-56L.

Colors: White, Gold, Lavender, Baby Blue.



Item #L1-30-5

NEW for 2009!

Item #L1-30-6

- Denim Vest Set,
- 5 Button Denim Vest w/ Denim Pant. • 100% Cotton.

Sizes: 38-56R, 38-56L.

Colors: Blue, Black.

- Denim Vest Set w/ Fancy Lapels.
- 5 Button Denim Vest w/ Denim Pant. • 100% Cotton.

Sizes: 38 - 56R, 38 - 56L.

Colors: Blue, Black.

Special Order Items, Order By 2 PM, Ship Out In 5 Days

Item #L1-29-1



Vest Shown is Not Included

- 2 Piece 1 Button Suit, • No Vest.
- Shawl Collar. • Poly/Rayon.

Sizes: 38 - 48 R, 40 48 L.

Color: Black, Ivory.

Item #L1-29-2



- 3 Piece Suit, with 3 Buttons, Multi Striped Pattern. Polyester.

Sizes: 38 - 48 R, 40 48 L.

Colors: Black, Tan, Lt. Grey.

Item #L1-29-3



- 3 Piece Suit, • 5 Button Jacket w/Jacquard .
- Plaid Pattern, • Long Tonal Vest & Pant.
- Poly/Rayon.

Sizes: 38 - 48R, 40 48L.

Colors: Black, Gold, Off White.



Item #L1-29-4

- Hidden Button, • Tonal Striped Suit
- French Cuffs. • Poly/Rayon.

Sizes: 38 - 48 R, 40 48 L.

Colors: Black, Off White, Shell.



Item #L1-29-5

- 3 Piece Suit, • 3 Button Jacket w/Piping on Lapel Edge, • Fancy Metallic Pattern Vest,
- Solid Pants. • Poly/Rayon.

Sizes: 38 - 48 R, 40 48 L.

Colors: Black, Ivory.

Item #L1-29-6



- 3 Piece Suit, • 3 Buttons,
- Fancy Vest, • Satin Trim,
- Matching Tie & Hankie,
- Twin Lapels, • Rib Stripe Pattern. • Polyester.

Sizes: 38 - 48 R, 40 48 L.

Colors: Black, White, Off White.

Special Order Items, Ship Out in 2-3 Days



Item #L1-30-1

• 3 Piece Fashion Length Suit, with 7 Buttons, Lapel Vest w/Square Bottom. Poly/Rayon.

Sizes: 38 - 48 R, 40 48 L.
Colors: Black, Sky, White.



Item #L1-30-2

• 3 Piece Evening Suit, 3 Buttons w/Tonal Pinstripes, • Triple Pleated Lapels, • Fashion Vest w/Quilted Pattern & Sparkles. • Poly/Rayon.

Sizes: 38 - 52 R, 40 54 L.
Colors: Black, Off White.



Item #L1-30-3

• 3 Piece Fashion Length Suit w/5 Buttons. • Gangster Stripe Pattern w/Reversible Vest. • Poly/Rayon.

Sizes: 38 - 48 R, 40 48 L.
Colors: White/Sky, White/Lavender, Off White /Orange, Off White/Fuchsia, Black/Yellow, Black/Turq.



Item #L1-30-4

• 3 Piece Compose Evening Suit, • 3 Buttons, • Pleated Lapels, • Shadow Pinstripes Jacket, • Sparkle Vest w/Swirl Pattern. • Striped Pants. • Poly/Rayon.

Sizes: 38-48R, 40-48L.
Colors: Off White, Black, New Off White (Cream).



Item #L1-30-5

• 3 Piece Fashion Length Evening Suit w/Long Vest. • Shadow Stripe Pattern. • Poly Rayon Blended.

Sizes: 38 - 48 R, 40 48L.
Colors: Black, Off White, Red, Sky, Coral, White.



Item #L1-30-6

• 3 Piece Suit, • 5 Buttons w/Lapel Vest. • Linen Look Fabric, • Cuffed Pants. • Poly/Rayon.

Sizes: 38 - 48 R, 40 48 L.
Colors: Black, Brown, B Tan, Navy, Sage, Charcoal, Grey, Luggage, Shell.