



Item #L1-11-1A
3/4 Length 7 Button Men's Suit.
Poly/Poplin Blend.
 Colors: Black, Navy, Olive, White, Red, Royal, Burgundy.
 Sizes: 38-72 R, 38-72L.

Item #L1-11-1B
3/4 Length 5 Button Boy's Suit.
Poly/Poplin Blend.
 Colors: Black, Grey, Royal, Burgundy.
 Sizes: 4-7, 8-20.

FATHER & SON SUITS

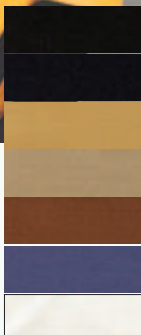


Item #L1-11-2A
Single Breasted 4 Buttons Men's Suit.
Poly/Poplin Blend
 Sizes: 38-72 R, 38-72L.
 Colors: Black, Navy, Cream, Grey, Olive, White, Royal, Burgundy.

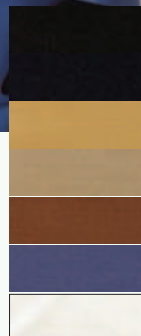
Item #L1-11-2B
Single Breasted 4 Buttons Boy's Suit.
Poly/Poplin Blend.
 Sizes: 4-7, 8-20. Colors: Black, White.



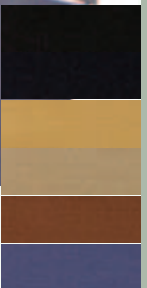
Item #L1-11-3
3 Piece, Single Breasted 4 Buttons Wool Feel Suit with Vest.
Poly/Rayon Blend.
 Colors: Black, Navy, Gold, Khaki, Cognac, Cobalt Blue, Cream.
 Sizes: 38-60R, 38-60L.



Item #L1-11-4
32" Flyfront, Hidden Button Wool Feel Suit. Poly/Viscose.
 Colors: Black, Navy, Gold, Khaki, Cognac, Cobalt Blue.
 Sizes: 38-60 R, 38-60L.



Item #L1-11-5
36" Length, 7 Button Suit. Wool Feel, Poly/Rayon Blend.
 Sizes: 36R-60R, 36L-60L
 Colors: Black, Navy, Gold, Khaki, Cognac, Cobalt Blue.



Order Stock Items Above By 2 PM, Ship Same Day

NEW for 2009!



Item #L1-12-1

- 2 Piece, 3 Button Suit.
- Side Vents, & Double Pleated Pants.
- Plaid Pattern.
- Super 140 Tropical Wool.

Colors: Lt. Grey with Peach and Aqua.
 Sizes: 40 - 56 R, 40 - 56L.

NEW for 2009!



Item #L1-12-2

- 2 Piece, 3 Button Suit.
- Double Vents, & Pleated Pants.
- Thin Banker Stripes
- Super 140 Tropical Wool.

Colors: Navy with Royal and Tan Stripes.
 Sizes: 40 - 56 R, 40 - 56L.

NEW for 2009!



Item #L1-12-3

- 2 Piece, 3 Button Suit.
- Double Vents, & Pleated Pants.
- Twill Multi Stripe Pattern.
- Super 140 Tropical Wool.

Colors: Charcoal with Gold/Grey Stripes
 Sizes: 38 -56R, 40-56L, 36-46S.

NEW for 2009!



Item #L1-12-4

- 2 Piece Suit, 3 Buttons with 34" Length
- Twin Chest Tabs with Peak Lapels, Ticket Pockets, Back Pleat with Belt,
- Burlap Pattern with Center Vent.
- Luxurious Super 100 Linen Blend.

Color: Beige Speck 02.
 Sizes: 40 - 60 R, 40 - 60 L.

NEW for 2009!



Item #L1-12-5

- 2 Piece Suit, 3 Buttons , 34" Length.
- Unique Twin Chest Tabs with Peak Lapels.
- Ticket Pockets, Back Pleat with Belt.
- Stipple Texture With Center Vent.
- Luxurious Super 100 Linen Blend.

Colors: Cream Corn 00, Seafoam 08, Brown 01, Navy 03. Sizes: 40 - 60 R, 40 - 60 L.

NEW for 2009!



Item #L1-12-6

- 2 Piece Suit, 3 Buttons, 34" Length.
- Unique Twin Chest Tabs with Peak Lapel. Ticket Pockets, Back Pleat with Belt.
- Box Pattern with Center Vent.
- Luxurious Super 100 Linen Blend.

Color: 06 Sage Grey Combo.
 Sizes: 40 - 60 R, 40 - 60 L.

NEW for 2009!

**Item #L1-13-1**

- Unique 3 Piece, 3 Button Tuxedo
- Contrast Shadow Stripe Lapels, Pocket Trim and Vest.
- Wide Leg, Pleated Fashion Pants.
- Super 120 Wool.

Colors: 01 Black/with Grey/Blue.

Sizes: 38 - 60 R, 40 - 60 L.

NEW for 2009!

**WIDE
LEG
PANTS****Item #L1-13-2**

- Unique 3 Piece, 3 Button Tuxedo.
- Contrast Shadow Stripe Lapels, Pocket Trim and Vest.
- Wide Leg, Pleated Fashion Pants.
- Super 120 Wool.

Colors: 02 Black with Bronze/Brown.

Sizes: 38 - 60 R, 40 - 60 L.

NEW for 2009!

**REGULAR
STRAIGHT
LEG PANTS****Item #L1-13-3**

- Unique 3 Piece, 3 Button Tuxedo
- Contrast Shadow Stripe Lapels, Pocket Trim and Vest.
- Regular Leg Pleated Pant.
- Super 120 Wool.

Colors: 03 Black with Bronze/Brown.

Sizes: 38-60R, 40-60L.

NEW for 2009!



Grey

Blue

Brown

Taupe

Black

Item #L1-13-4

- 2 Piece, Double Breasted Suit.
- Slant Close Jacket, Tabs on Pockets.
- Back Pleat, & Double Vents
- Lavender Pic Stitch Details.
- Pinstripe Pattern, Wool Blend.

Colors: 01 Black/Lav, 02 Blue/Lav.,

Grey/Lav., 05 Brown/Lav., 06 Taupe/Lav.

Sizes: 38-60R, 40-60L.

NEW for 2009!

**Item #L1-13-5**

- 2 Piece, 3 Button Suit.
- 2 Side Vents, & Double Pleated Pants.
- Multi Striation Stripes.
- Super 140 Tropical Wool

Color: Beige Combo.

Sizes: 38-56R, 40-56L.

NEW for 2009!

**Item #L1-13-6**

- 2 Piece, 3 Button Suit.
- 2 Side Vents & Double Pleated Pants.
- Multi Stripe Pattern.
- Super 140 Tropical Wool.

Colors: Brown with Tan & Blue Stripes.

Sizes: 39-56R, 40-56L.



Item #L1-14-1

3 Button Wool Feel Suit with Pinstripes.
Wool Feel PR Blend.

Sizes: 38 - 60R, 38 - 60 L.

Colors: Black /White, Grey White.



Item #L1-14-2

- 3 Button Suit with Multi Stripe Pattern.
- Poly/Rayon.

Sizes: 38R - 60R, 38L - 60L.

Colors: Navy, Tan, Dk Grey, M. Grey.



Item #L1-14-3A

3 Pc. Suit, 3 Buttons, 32" Lgth w/Vest. Wool Feel.

Item #L1-14-3B

3 Pc. Suit, 4 Buttons, 32" Lgth w/ Vest. Wool Feel.

Sizes: 38 - 60R, 38 - 60 L.

Colors: Grey, Tan



Item #L1-14-4

- 2 Piece Suit w/3 Buttons, • Side Vents & Pic Stitching. • Super 100 Wool.

Sizes: 38R - 60R, 38L - 60L.

Colors: Solid Black, Solid Grey, Black Stripe, Grey Stripe.



Item #L1-14-5A

- 3 Piece Suit, •5 Buttons. • 37" Long Plaid Jacket & Vest, • Solid Pants, •Back Pleat, • Double Vents. • Polyester.

Sizes: 38 - 60R, 38 - 60 L.

Colors: Olive, Tan, Grey, Burgundy.

Item #L1-14-5B

Same as Above in Boys. Sizes: 8-20.



Grey Shown Is Not Available

Item #L1-14-6

- 3 Piece Suit, • 5 Buttons w/Double Breasted Vest, • Back Pleat, • Double Vents, • Stripe Pattern. • Polyester.

Sizes: 38 - 60R, 38 - 60 L.

Colors: Black, Taupe.



NEW for 2009!

Item #L1-15-1

- 3 Piece Fashion Suit w/5 Buttons. • Back Pleat,
- Ticket Pocket, • Curved Lapels,
- Double Vents. • Poly/Rayon.

Sizes: 38R - 60R, 38L - 60L.

Colors: Black, Brown(Taupe), Olive, Grey



NEW for 2009!

Item #L1-15-2

- 3 Piece Suit w/5 Buttons, • Back Pleat,
- Double Vents, • Tonal Stripe,
- Fashion Length. Polyester.

Sizes: 38R - 60R, 38L - 60L.

Colors: Black, Burgundy, White, Tan, Silver.



NEW for 2009!

Item #L1-15-3

- 3 Piece Suit with 5 Buttons, • Back Pleat,
- Double Vents, • Shadow Stripe,
- Fashion Length. • Polyester.

Sizes: 38R - 60R, 38L - 60L.

Colors: Grey, Black, White, Cream.



NEW for 2009!

Item #L1-15-4

- 3 Button Suit with Multi Stripe Pattern.
- Wool Blend.

Sizes: 38R - 60R, 38L - 60L.

Colors: Black/Brown, Navy/Brown.



NEW for 2009!

Item #L1-15-5

- 3 Piece Suit w/3 Buttons, • Shadow Stripe
- Pattern, w/Vest. • Poly/Rayon.

Sizes: 38R-60R, 38L-60L.

Colors: Black, Navy, Brown, Grey, Tan.



NEW for 2009!

Item #L1-15-6

- 3 Button Suit w/Side Vents, • Windowpane
- Pattern. Poly/Rayon.

Sizes: 38R-60R, 38L-60L.

Colors: Grey, Navy, Brown.

Special Order Items, Order By 2 PM, Ship Same Day



Item #L1-16-1

• 3 Piece Suit, • 5 Buttons w/Back Pleat & Double Vents. • Wool Feel PR Blend.

Sizes: 38 - 60R, 38 - 60 L

Colors: Blue Check, Navy Check, Grey/Check, Tan/Check.



Item #L1-16-2

3 Piece Suit, 5 Buttons with Action Back Pleats, Double Vents, Double Breasted Vest, Pinstripe Pattern. Wool Feel PR Blend.

Sizes: 38 - 60R, 38 - 60 L.

Colors: Lt Brown, Lt. Olive, Black, Navy.



Item #L1-16-3

• 3 Piece Suit, • 5 Buttons • Double Breasted Vest, • Center Back Pleat, • Double Vents, • Plaid Pattern. • Polyester.

Sizes: 38 - 60R, 38 - 60 L.

Colors: Blue, Rust, Red, Tan, Brown, Grey.



Item #L1-16-4A

• 3 Piece Fashion Length Suit, • 7 Buttons w/Tone on Tone Windowpane Jacket, • Solid Lapel Vest & Pant. • Polyester.

Colors: Brown, Gold, Black, Sky, White, Cream.

Sizes: 38 - 60 R, 38 - 60 L.

Item #L1-16-4B

Same as Above in Boys. Sizes: 8-20.



Item #L1-16-5A

3 Piece Suit, Single Breasted 3 Button Suit with Stripe Pattern. Wool Feel PR Blend.

Sizes: 38 - 60R, 38 - 60 L.

Colors: Black Stripe, Lt Grey Stripe, M Grey Stripe, Navy Stripe.



Item #L1-16-6

• 3 Piece Evening Suit, • 3/4 Lgth. • 7 Buttons. • Contrasting Lapels & Vest. • Polyester.

Colors: Black/Purple, Black/Mustard, Cream/Royal Blue, Black/Red.

Sizes: 38-60R, 38-60L.

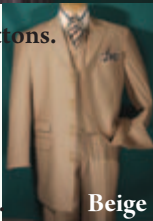
Special Order Items, Order By 2 PM, Ship Same Day

Item #L1-17-1



Charcoal

- 3 Piece Suit with 4 Paired Buttons.
- 34" Length with Peak Lapels.
- Double Breasted Slant Vest.
- Back Belt with Buttons.
- Gangster Stripe Pattern.
- Soft Hand Poly/Rayon Blend.



Beige

Sizes: 38R- 56R, 40L to 56L.
Colors: Black, Grey, Beige, Brown.

Item #L1-17-2



Beige

- 3 Piece Suit w Tonal Contrast Vest.
- 5 Buttons, 34" Length, Back Pleated
- Contrast Lapels and Collar.
- Side Vents & Back Belt with Buttons.
- BirdsEye Pattern.
- Soft Hand Poly/Rayon Blended.

Sizes: 38R- 56R, 40L to 56L.

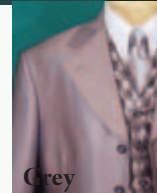
Grey Sand Beige Black

Item #L-17-3



Black

- 3 Piece Suit w Vest
- 5 Buttons, 34" Length
- Center Back Pleat & Side Vents
- Vest with Lapels & Diamond Pattern.
- Semi Wide Leg Pants.
- BONUS! Free Tie and Hankie.
- Soft Hand Poly/Rayon Blended.



Grey



Ivory



Taupe

Sizes: 38R- 56R, 40L to 56L.

Clors: Black Combo, Grey Combo, Ivory Combo, Taupe Combo.



Item #L1-17-4

- 3 Piece Evening Suit w Batik Vest.
- 5 Buttons, 34" Length,
- Jacket with Batik Printed Trims.
- French Cuffs & Back Center Inverted Pleat.
- Solid Pants •100% Polyester.

Sizes: 38R-56R, 40L-56L.
Colors: Black, White, Ivory.

Item #L1-17-5



Black

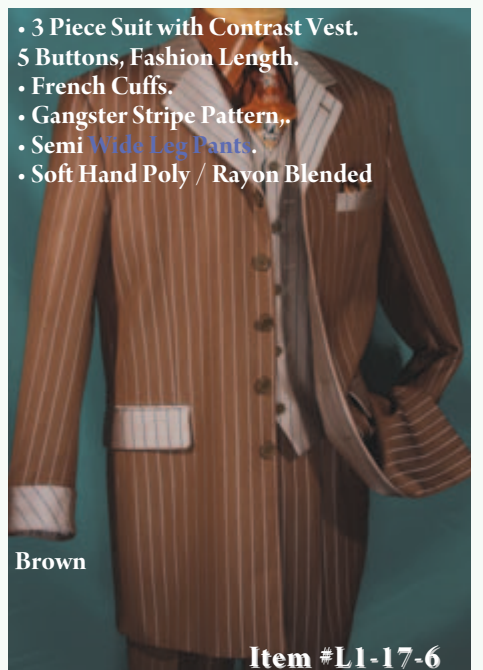
- 3 Piece Suit, 4 Buttons
- Slant Vest.
- Gangster Stripe.
- Center Back Pleat
- Double Vents.
- Poly/Rayon Blended



White

Sizes: 38 - 56 R, 40 - 56 L.

Colors: Black Combo, White Combo.



Brown

- 3 Piece Suit with Contrast Vest.
- 5 Buttons, Fashion Length.
- French Cuffs.
- Gangster Stripe Pattern.
- Semi Wide Leg Pants.
- Soft Hand Poly / Rayon Blended

Item #L1-17-6

Navy

Grey

Black

Sizes: 38 - 56 R, 40 - 56 L.

Colors: Black, Grey, Honey Brown, Navy.

Item #L1-18-1



- 2 Piece Suit, • Single Breasted.
- 3 Buttons, • Double Vents, • Multi Striped Pattern. • Soft Hand Poly/Rayon Blended.

Sizes: 36 - 56R, 40 - 56L, 36 - 46S.
Colors: Beige, Grey, Taupe.

Item #L1-18-2



- 2 Piece Suit, • Single Breasted.
- 3 Buttons, w/Windowpane Pattern.
- Soft Hand Poly/Rayon Blended.

Sizes: 36 - 56R, 40 - 56L, 36 - 46S.
Colors: Black, Charcoal Grey, Dark Olive, Taupe.

Item #L1-18-3



- 2 Piece Suit,
- 2 Buttons with Multi Stripe Pattern.
- Soft Hand Poly/Rayon Blended.

Sizes: 36 - 56R, 40 - 56L, 36 - 46S.
Colors: Black, Charcoal Grey, Navy, Taupe.



Item #L1-18-4

- 2 Piece Suit, • 2 Buttons w/Single Vent,
- Solid Pattern, • Flat Front Pant.
- Soft Hand Poly/Rayon Blended.

Sizes: 36 - 52R, 40 - 52L, 36 - 46S.
Colors: Beige, Black, Brown, Heather Grey, Heather Brown, Navy.

Item #L1-18-5



- 3 Piece Suit, • 3 Buttons w/Vest, • Side Vents, • Shadow Stripe Pattern.
- Poly/Rayon Blended.

Sizes: 38 - 56 R, L.
Colors: Black, Midnight Navy, White.



Item #L1-18-6

- 3 Piece, 3 Button Suit w/ Double Vents,
- Tone on Tone Pin Stripes.
- Soft Hand Poly/Rayon Blended.

Sizes: 36 - 52R, 40 - 52L, 36 - 46S.
Colors: Black, Medium Grey, Taupe.

Special Order Items, Order By 2 PM, Ship Next Day

**Item #L1-19-1**

- Unique 3 Piece, 5 Button Tuxedo. • 3 Vest Colors Available • 34" Length, w/Satin Binding, • Center Back Pleat.
- No Satin Stripe on Pant, •Poplin.

Sizes: 38R- 56R, 40L to 56L.

Colors: Black, Cream, White.

Vest Colors: Black, Cream, White.

Item #L1-19-2

- 2 Piece Suit, • Single Breasted w/3 Buttons, • Light & Comfortable Linen Texture Suit. • Linen/Cotton Blended.

Sizes: 36 - 52R, 40 - 52L, 36 - 46S.

Colors: White, Ivory, Natural.

Item #L1-19-3

- 2 Piece 2 Button Suit, • Peack Lapel,
- Center Vent, • Pinstripe Pattern,
- Flat Front Pants.
- Soft Hand Poly/Rayon.

Sizes: 36 - 48R, 40 - 48L, 36 - 44S.

Colors: Black, Grey, Navy.

**Item #L1-19-4**

- Classic 3 Button Blazer in Fine Wool.
- 100% Wool.

Sizes: 38R- 56R, 40L to 56L, 36S -46S.

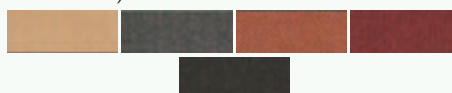
Colors: Black, Navy.

Item #L1-19-5

- 3 Piece, • 3 Button Suit w/Vest & Double Vents, • Solid Color.
- Poly/Rayon Blended.

Sizes: 38R- 56R, 40L to 56L, 36S -46S.

Colors: Khaki, Heather Gray, Cognac, Maroon, Black.

**Item #L1-19-6**

- 3 Piece 4 Button Suit, • 34" Length,
- Center Back Pleat, • Back Belt,
- Multi Stripe Pattern, •Semi Wide Leg Pants. • Soft Hand Poly/Rayon Blended.

Sizes: 38 - 56 R, 40 - 56 L.

Colors: Grey, Khaki, Black.

Order Stock Items Above By 2 PM, Ship Out Next Day

Item #L1-20-1



- 3 Piece Suit, 34" Length.
- 5 Buttons with Center Back Pleat.
- Bold Stripe Pattern.
- Semi Wide Leg Pants
- Polyester.

Silver



Beige

Black

Ivory

Sizes: 38 - 56 R, 40 - 56 L.
Colors: Beige, Black, Ivory, Silver.

Item #L1-20-2



Beige

- 3 Piece Suit.
- 3 Buttons.
- Double Vents.
- Multi Stripes.
- Soft Hand Poly/Rayon Blend.

Grey

Sizes: 36R-56R, 40L-56L, 36S-46S.
Colors: Beige Combo, Grey Combo.

Item #L-20-3



Taupe

- 3 Piece, 3 Button Suit.
- Double Vent.
- Shark Skin with Stripes.
- Soft Hand Poly/Rayon Blend.

Grey

Tan

Sizes: 36R - 56R, 40L - 56L, 36S - 46S.
Colors: Tan, Light Grey, Taupe



Grey



Beige

Item #L1-20-4

- 3 Piece, 3 Button Suit.
- Double Vents
- Tone on Tone Shadow PinStripe.
- Soft Hand Poly/Rayon Blend.

Sizes: 36 - 52R, 40 - 52L, 36 - 46S.
Colors: Beige, Light Grey.



Navy

Black

Item #L1-20-5

- 2 Piece Suit, 3 Buttons.
- Fine Pin Stripe Pattern.
- Soft Hand Poly/Rayon Blended.

Sizes: 36-56R, 40-56L, 36-46S.
Colors: Black/White, Navy/Blue



Oatmeal

Grey

Mocha

Black

Item #L1-20-6

- 2 Piece Suit, 3 Button Suit.
- Shadow Pinstripe Pattern.
- Soft Hand Poly/Rayon Blend.

Sizes: 36 - 56R, 40 - 56L, 36 - 46S.
Colors: Medium Grey, Mocha, Oatmeal, Black